

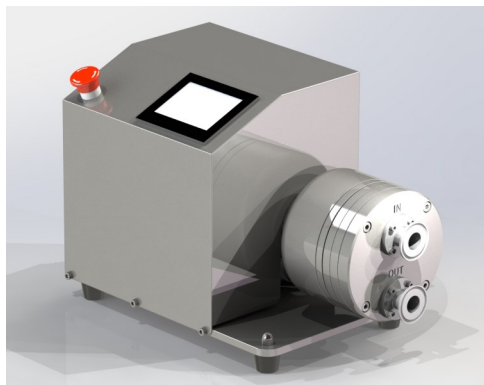
Lucksun DDP Series Pump

Shanghai Lucksun Flowtech Co., Ltd
 Address : North Block, Building No 1, No 98,
 Lane 100, Jiugan Road, Shanghai, China
 Tel : 86-21-57113911
 Website : www.Lucksun-flowtech.com
 E-mail : Lucksun_sales@163.com



⇒ Technical Information:

- ◇ DDP30 SWE/TA1/R/HSR (With Speed Control Panel)
- ◇ DDP40 SWE/TA1/R/HSR (With Speed Control Panel)



Features and Benefits

- 4.3" Control panel to adjust working speed
- Drainable 4-diaphragms pump design
- Low shear rate, gentle transfer
- Easy to expel air bubbles
- Sanitary pump, CIP & SIP are allowed
- Good flow accuracy, good reproducibility
- Dry run, good self-suction
- Good linear accuracy and high turn down ratio
- Can long time running on low speed
- Low pulsation
- No wear particles generated on running
- Non-metal parts complied with FDA and USP
- Metal wetted parts have 3.1B and roughness Cert.

⇒ Technical Data:

Type	DDP30SWE/TA1/R/HSR	DDP40SWE/TA1/R/HSR
Flow rate maximum (L/Hour)	1500	2500
Flow range on stable flow (L/hour)	100-1500	200-2500
Flow range on stable pressure (L/hour)	200-1500	400-2500
Max pressure (Bar) (<40°C)	6	6
Max pressure (Bar) (>40°C)	4	4
Eccentric shaft angle	3°	5°
Shaft diameter	20mm	20mm
Suction height (Meter)	3.5	3.5
Displacement/Revolution (mL)	14	23.5
Total volume of pump chamber (mL)	227	227
Connector size	1"TC ⁽¹⁾	1"TC ⁽¹⁾
Internal diameter of connector	22mm	22mm
Clamp flange diameter	50.5mm	50.5mm
Connector direction	Up in Down out ⁽²⁾	Up in Down out ⁽²⁾
Wetted parts	Stainless Steel 316L	Stainless Steel 316L
Other options of wetted parts	N,H,D,T,P,F ⁽³⁾	N,H,D,T,P,F ⁽³⁾
Roughness of internal surface	Ra<0,4um	Ra<0,4um
Material of diaphragm	TPE	TPE
Material of check valve	EPDM	EPDM
Material of O-ring	EPDM	EPDM
CIP	YES	YES
SIP	YES	YES
Shaft and bearing housing	Stainless Steel 316	Stainless Steel 316
Motor	HCFA Servo motor	HCFA Servo motor
Motor power	1.5kW	1.5kW
Motor rated speed	1800RPM	1800RPM
Motor power supply	1x220V	1x220V
Forced cooling fan	60W	60W
Power supply to cooling fan	1x220V	1x220V

Notes:

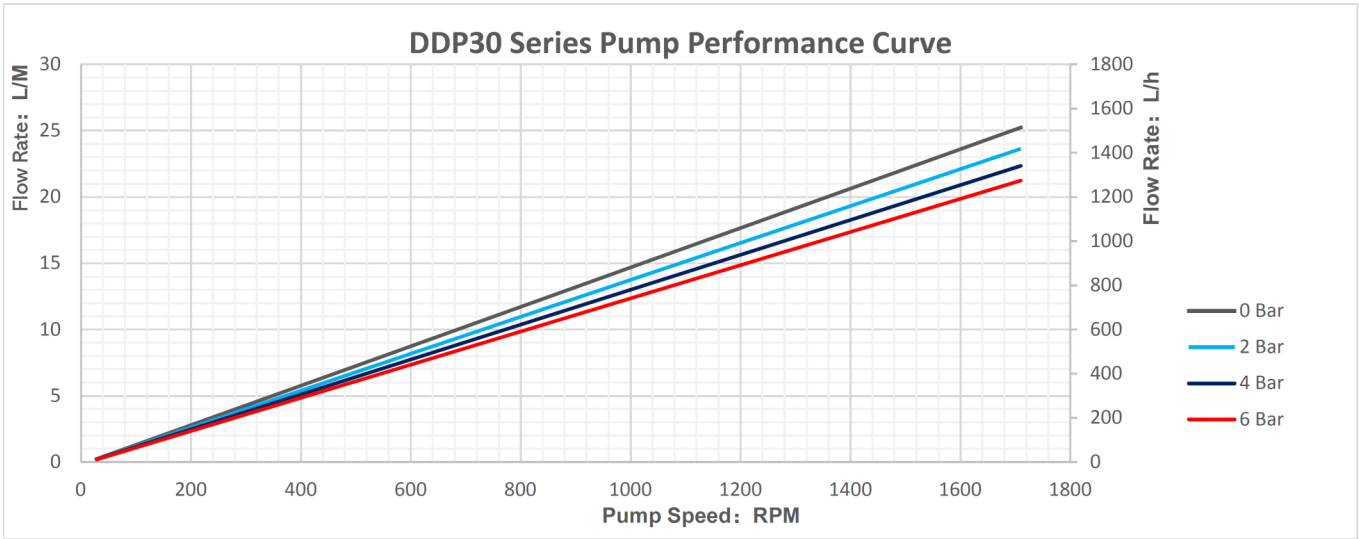
- (1) Options for connectors size : 1.5"TC ;
 - (2) Options for connectors direction : Recommended direction: Up in Down out, direction could be rotated.
 - (3) Options for wetted parts : N-904L ; H-Hastelloy alloy C276 ; D-Duplex stainless steel 2507 ; T-Titanium ; P-PP ; F-PVDF ; and other materials ;
- Above options, can be found on our <Products ordering code> . Products code shall be changed relevantly. Other request, please contact our company or local distributor.

Lucksun DDP Series Pump

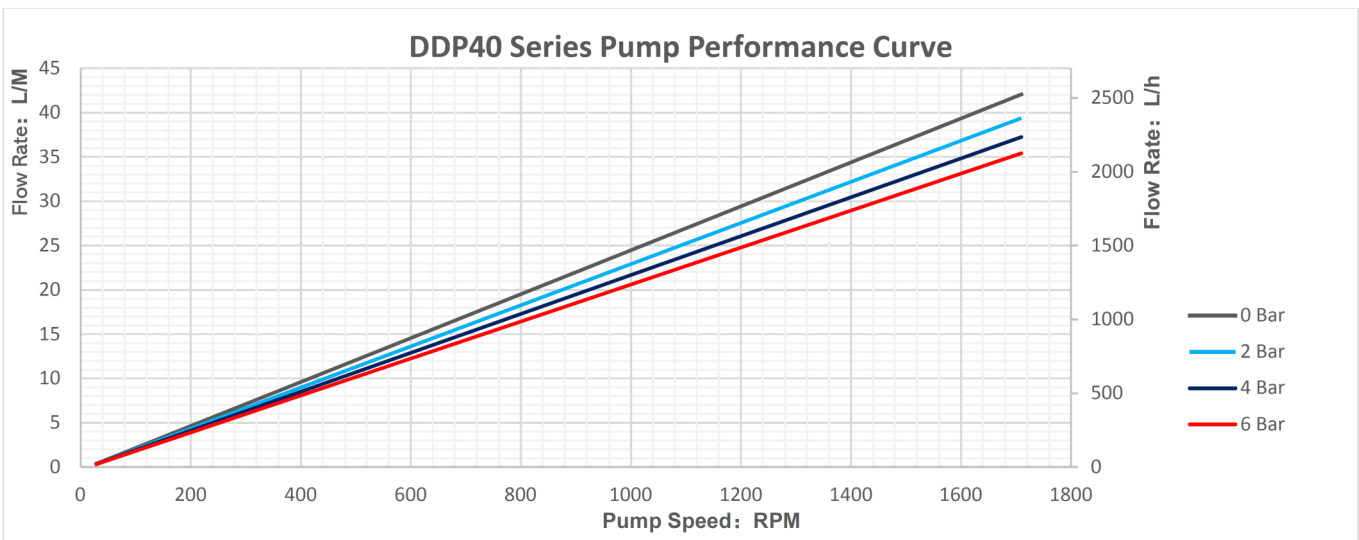
Shanghai Lucksun Flowtech Co., Ltd
 Address : North Block, Building No 1, No 98,
 Lane 100, Jiugan Road, Shanghai, China
 Tel : 86-21-57113911
 Website : www.Lucksun-flowtech.com
 E-mail : Lucksun_sales@163.com



⇒ Performance Curve:



Above data based on the test media is water, viscosity and specific gravity is 1, on ambient temperature.



Above data based on the test media is water, viscosity and specific gravity is 1, on ambient temperature.

⇒ Outline Dimension:

